



**Safer  
Lighter  
Stronger**

PN: NB7T300SY



# **Fitting Guide & Owners Manual**

**TOYOTA LANDCRUISER  
300 series  
07/21 ON**

76mm Series 2 NUDGE BAR  
VEHICLE FRONTAL PROTECTION SYSTEM (VFPS)  
FOR AIR BAG & ADR COMPLIANT VEHICLES



# Index

---

## **Pages 3-5**

ECB's Benefits  
Product Care

## **Pages 6-7**

Stage 1 - Vehicle preparation  
Stage 2 - Remove outer lower covers  
Stage 3 - Lower bumper  
Stage 4 - Inner guard  
Stage 5 - Radiator cover  
Stage 6 - Disconnect harness

## **Pages 8-9**

Stage 7 - Grille fixings  
Stage 8 - Flares  
Stage 9 - Bumper removal  
Stage 10 - Steel support angles  
Stage 11 to 12 - Mount fitment

## **Pages 10-11**

Stage 13 - Bumper trim  
Stage 14 - Sensor relocation  
Stage 15 - Camera removal  
Stages 16 to 17 - Camera wiring  
Stage 18 - Camera fitment

## **Pages 12-13**

Stage 19 - Harness extensions  
Stage 20 - Refit bumper  
Stage 21 - Trim outer lower covers  
Stage 22 - Accessory Lighting  
Stage 23 - Bar installation  
Stage 24 - Align bar

## **Pages 14-15**

Stage 25 - Connect camera and sensors  
Stage 26 - Connect battery and check all  
electrics  
Final Checks & Installation Kit

## **Pages 16-17**

Finished Product  
Warranty Registration

## **Pages 18-19**

Notes

# The Features of ECB

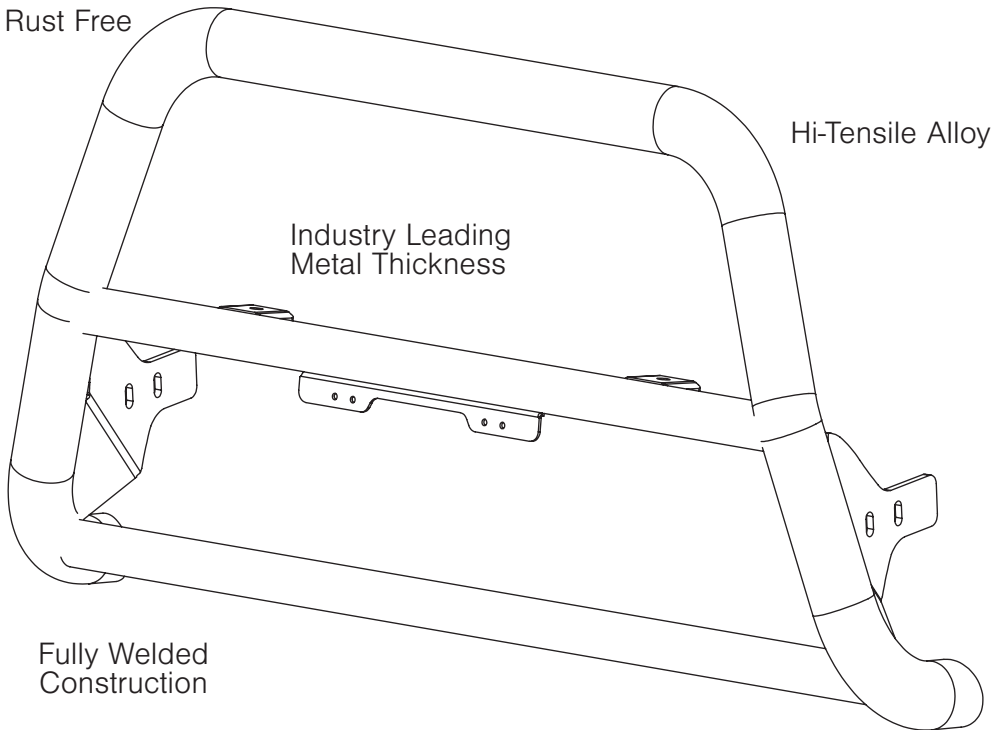
---

Unmatched  
Strength

Rust Free

Hi-Tensile Alloy

Industry Leading  
Metal Thickness



Fully Welded  
Construction

6mm Thick  
Hi-Tensile Alloy

# ECB's Benefits

---

## **Built to Perform - Not to a Price**

ECB are proud to claim that their channels are not jigsaw puzzles that are bolted together, or even multiple sections welded together. Where any welding is required, it is done to the highest standards by qualified welders, not machines.

## **Anti-Corrosive Nature of Alloy**

The composition of ECB's alloy has a very high resistance to corrosion. Rust not only looks unappealing but greatly reduces the strength of the metal. Rust can and will weaken the structural integrity of a steel bullbar effectively rendering it useless over time.

## **Australian Made**

Established in 1971, we utilise decades of experience designing, engineering and building products in Australia to suit Australian conditions. We can ensure the best quality controls and help support the local economy and employ over 90 proud Australians.

## **Weight Saving Benefits**

An ECB alloy bullbar is typically half the weight of a steel bullbar. Unnecessary suspension upgrades are not required. The reduced weight also contributes to increased fuel economy and less wear and tear on tyres, suspension and braking components.

## **Welds That Work**

ECB uses only the strongest welds and welding techniques to ensure every product is as structurally sound as possible. MIG (Metal Inert Gas) welding techniques are employed ensuring the welds are as thick as the thickest section of alloy's being joined together.

## **Lifetime Warranty**

ECB provide a lifetime warranty and consumer guarantee on all of our manufactured products. This guarantee highlights the confidence in our ability and provides complete peace of mind for your purchase for the lifetime you own your vehicle.

# Product Care

---

## Polished Products

Being a premium mirror polished finish, regular maintenance will be required to keep that iconic ECB shine. We recommend using our own brand of Aluminium Polish. This formula has been tried and tested and in our opinion is the world's best standard.

**Directions:** Apply a small quantity of Aluminium Polish to a clean soft cloth and rub the metal surface. The longer the rubbing the brighter the surface becomes. Wipe off Aluminium Polish with clean soft cloth. Also suitable for motorised buffing machines. **Note: There are more specific details on the polish bottle. Please read before use.**

## Powdercoated Products

Our powdercoated finishes are very low maintenance. Infact there is actually very little you will ever need to do for this product. Just clean it as you would your car and it will stay looking good as new.

## ECB Aluminium Polish

When you're looking for that showroom finish look for your polished automotive products, you can depend on the no compromise quality of East Coast Bullbars Aluminium Polish. This specifically designed product is the best polish available and we guarantee that this \$#!+ works. Within our decades of manufacturing polished alloy products we have trialed a large range of different polishes on the market and believe without a doubt that nothing beats the finish quality of East Coast Bullbars Aluminium Polish.

East Coast Bullbars Aluminium Polish is excellent for use by hand and is ideal for polished bullbars, nudge bar and stainless steel products. This polish will clean, polish and protect your product from the elements whilst bringing your products back to that showroom finish look.



# NB7T300SY

---

## Stage 1

- Test drive vehicle to ensure all driver assists are correctly working and to gauge effectiveness. Park on a flat, level surface.
- Apply parking brake and lift bonnet.
- Unwrap ECB Protection Bar and disconnect mounts. Discard bolts.
- Ensure these instructions are left with the vehicle owner/operator.



- **Turn vehicle on to Ignition Mode. Disconnect battery.**

**NOTE: Disconnecting safety features with battery connected may disable/damage safety features, which will require Toyota dealership to reset settings/replace parts. As all vehicles are different, even with battery disconnected, vehicle may need to be reset.**

---

## Stage 2

- From under front of vehicle remove outer plastic covers, five (5) 10mm head bolts and one (1) 12mm nylon nut.



## Stage 3

- From lower edge of bumper remove four (4) 10mm head bolts.



# Toyota 300 Series LandCruiser 7-21on

## Stage 4

- Under front wheel arch remove two (2) push pull clips and one (1) T25 Torx screw (per side) from inner guards.



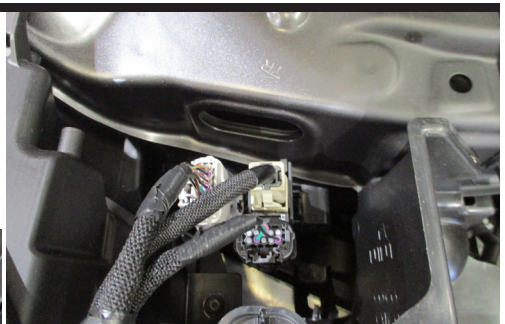
## Stage 5

- Remove seven (7) push clips from top radiator cover plastic trim and remove.



## Stage 6

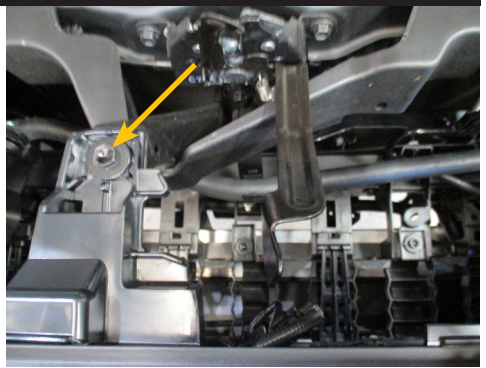
- Disconnect parking sensors, sonar and camera harness (if fitted) on driver side behind grille.
- Disconnect headlight washer hose, passenger side behind grille.



# NB7T300SY

## Stage 7

- Between headlights, remove three (3) 10mm head bolts from rear of grille.



## Stage 8

- Reach between inner guard and guard to release two (2) lower clips on flares.
- Gently pull flares away from outer guard.
- Remove one (1) push pull clip (per side) from guard bumper join.



## Stage 9

- Gently pull outer wing away from vehicle and under headlights to release from attachment clips.
- Pull centre of grille to release from attachment clips.
- Remove bumper.





# Toyota 300 Series LandCruiser 7-21on

## Stage 10

- Under the alloy bumper support on the lower section of the chassis rail, remove two (2) 17mm head bolts and two (2) 14mm head bolts from the steel angle attached to the alloy bumper support.
- Remove the steel angle.



## Stage 11

- Fit ECB steel mounts to underside of front alloy bumper support using two (2) M10 x 1.25 x 40mm bolts, spring washer and flat washer.
- Install M12 x 1.25 x 40mm bolts, spring washer and flat washer to front of chassis rail and underside of chassis rail.
- Finger tighten only.



## Stage 12

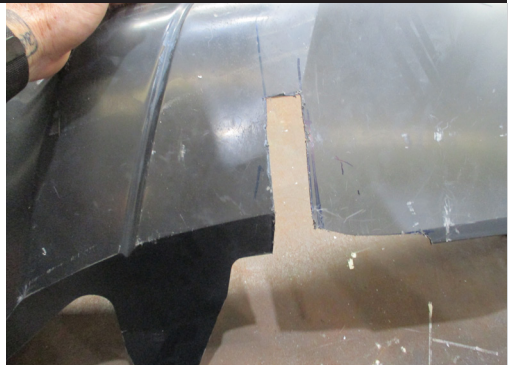
- From inner chassis rail secure mount using M12 x 1.75 x 120mm bolt, flat washer, 40 x 40 x 4mm steel washer plate, 13nb spacer tube, flat washer, spring washer and nut.
- Check inner measurement on Protection Bar is same as outer measurement on steel mounting brackets.
- Align central to vehicle and tighten all bolts.



# NB7T300SY

## Stage 13

- Using paper masking tape, mask area to be cut to avoid damage.
- As printers vary, check measure template to ensure correct sizing.
- From this instruction, using sharp scissors, carefully cut out template.
- Mark and cut bumper using jigsaw, hack saw or similar.



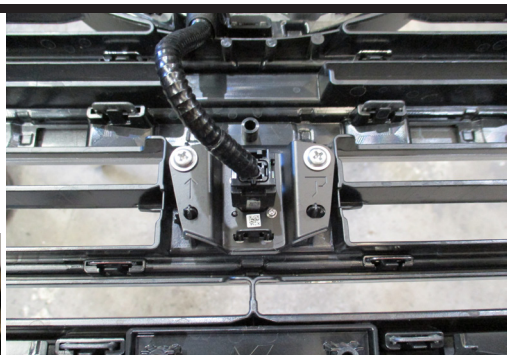
## Stage 14

- Remove two centre parking sensors and place into sensor housing on Nudge Bar the same direction as they were in bumper.



## Stage 15

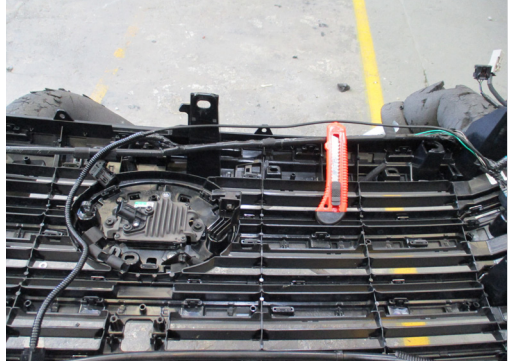
- If camera fitted, remove from grille two (2) philips head screws.
- Unclip outer cover by pressing down on clips, top and bottom of cover to remove.



# Toyota 300 Series LandCruiser 7-21on

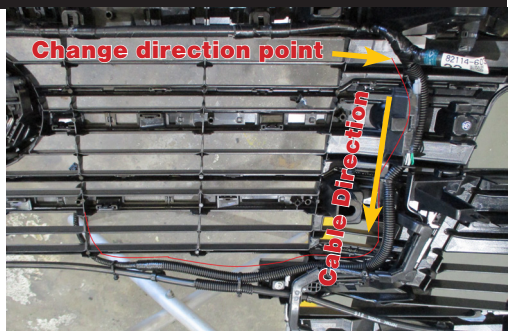
## Stage 16

- Remove wiring from clips across top rear of grille.
- Using a sharp knife or similar, carefully slit covering tape ensuring wiring inside is not damaged.
- Remove camera wiring back to join where loom separates from top to bottom. Cover wiring with Convoluted tubing (supplied). Retape top loom and run wiring down to bottom of grille with other loom. Attach loom to lower section of grille.



## Stage 17

- Remove camera wiring back to join where loom separates from top to bottom.
- Cover wiring with Convoluted tubing (supplied). Retape top loom and run wiring down to bottom of grille with other loom.
- Attach loom to lower section of grille using zip ties supplied.



**NOTE:** Grille is not cut for Nudge Bars. Cut grille for 2 Post Bar shown.

## Stage 18

- Place camera into Protection Bar.
- Align camera to hole in cross brace. Secure camera to mount using two (2) self drilling screws.

Ensure top of camera mount is parallel to cross brace.



# NB7T300SY

## Stage 19

- Connect camera and parking sensor extension to camera and parking sensor harness.
- Feed camera and parking sensor harness through bottom of grille above number plate.



## Stage 20

- Refit bumper in reverse as per steps 3 to 8.
- Install number plate bracket to front of bumper using two M6 black combo screws.



## Stage 21

- Place outer plastic covers in position on underside of bumper.
- Trim to suit mounting brackets and refit to vehicle.



# Toyota 300 Series LandCruiser 7-21on

## Stage 22

- If fitting accessory light to Protection Bar, Install should be completed at this stage.
- See instructions for Accessory Light Kit to Install.



## Stage 23

- Fit protection bar to ECB steel mounting brackets using M10 x 1.25 x 40mm bolts, flat washers, spring washers and nuts.
- Do not tighten.



## Stage 24

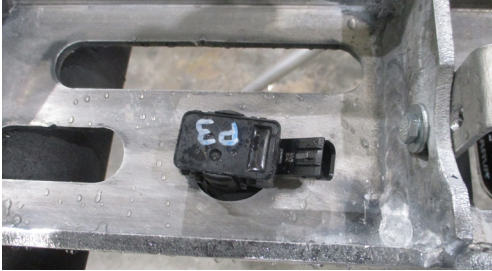
- Align protection bar with vehicle and tighten all bolts.



# NB7T300SY

## Stage 25

- Connect camera and parking sensors.



## Stage 26

- Reconnect battery and refit all plastics.
- Test camera and sensors and other safety features for correct operation.

# Final Checks & Installation Kit

---

## Ensure Number Plate is Clearly Visible

Note: When fitting/refitting the licence plate to the vehicle, ensure there is no obstruction to licence plate vision in accordance with local authorities. If required relocate licence plate to an alternate location.

## Further VFPS Notes

1. Do not attach VFPS to the vehicle using anchorages not intended for this purpose (e.g. engine mounting bolts)
2. Do not use this product for any vehicle make or model, other than those specified by the VFPS manufacturer
3. Do not remove the plaque or label from the VFPS
4. Do not modify the structure of the VFPS in any way
5. No accessory or fitment should project forward of the VFPS forward profile
6. **Ensure these instructions are left with the vehicle owner and/or operator**

## Important Information

Periodically check bolts and nuts for correct tightness, especially if traveling on rough roads.

## Installation Kit

1 -Pair steel mounting brackets	10 - M10 x 1.25 x 40mm Bolts
1 - Number plate bracket	14 - M10 Flat washers
4 - 40x40x4mm Flat washer washer	10 - M10 Spring washers
2 - 58mm 13nb Spacer tube	4 - M10 x 1.25 Nuts
2 - M12 x 1.75 x120mm Bolt	2 - 8-18 x 12mm Self drilling screw
6 - M12 x 1.25 x 40mm Bolt	2 - Park sensor harness extensions kit
10 - M12 Flat washers	1 - 600mm length convoluted tubing
8 - M12 Spring washers	20 - 150mm zip ties
2 - M12 x 1.75 Nuts	

# Finished Product

---





# Warranty Registration

---

## Contact Details

Name: \_\_\_\_\_

Address: \_\_\_\_\_

\_\_\_\_\_

Product: **NB7T300SY**

Email: \_\_\_\_\_

Phone: \_\_\_\_\_

Work Order Number: \_\_\_\_\_

You can find this on the silver label of your ECB product.

By submitting this registration you automatically subscribe to ECB's mail outs.  
You can unsubscribe at any time.

## Register Online

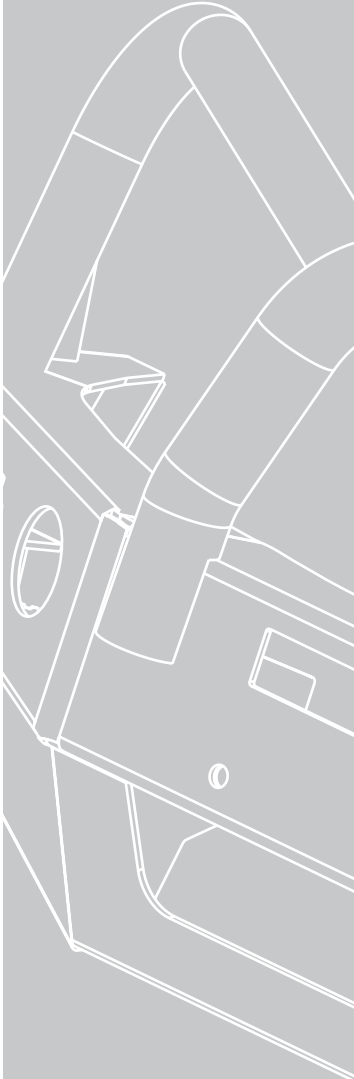
For online registration please go online to [ecb.com.au/warranty-registration](http://ecb.com.au/warranty-registration)  
If you have any questions please contact our national office on **1800 069 145**  
or [ecb.com.au](http://ecb.com.au)



**PN: NB7T300SY**  
**Please post to PO Box 122,**  
**Margate QLD 4019**



REPLACES: N/A  
REVISED: 17.07.22



1800 069 145  
[ecb.com.au](http://ecb.com.au)

**Safer**  
**Lighter**  
**Stronger**

29 Snook St, Clontarf QLD 4019  
PO Box 122, Margate QLD 4019